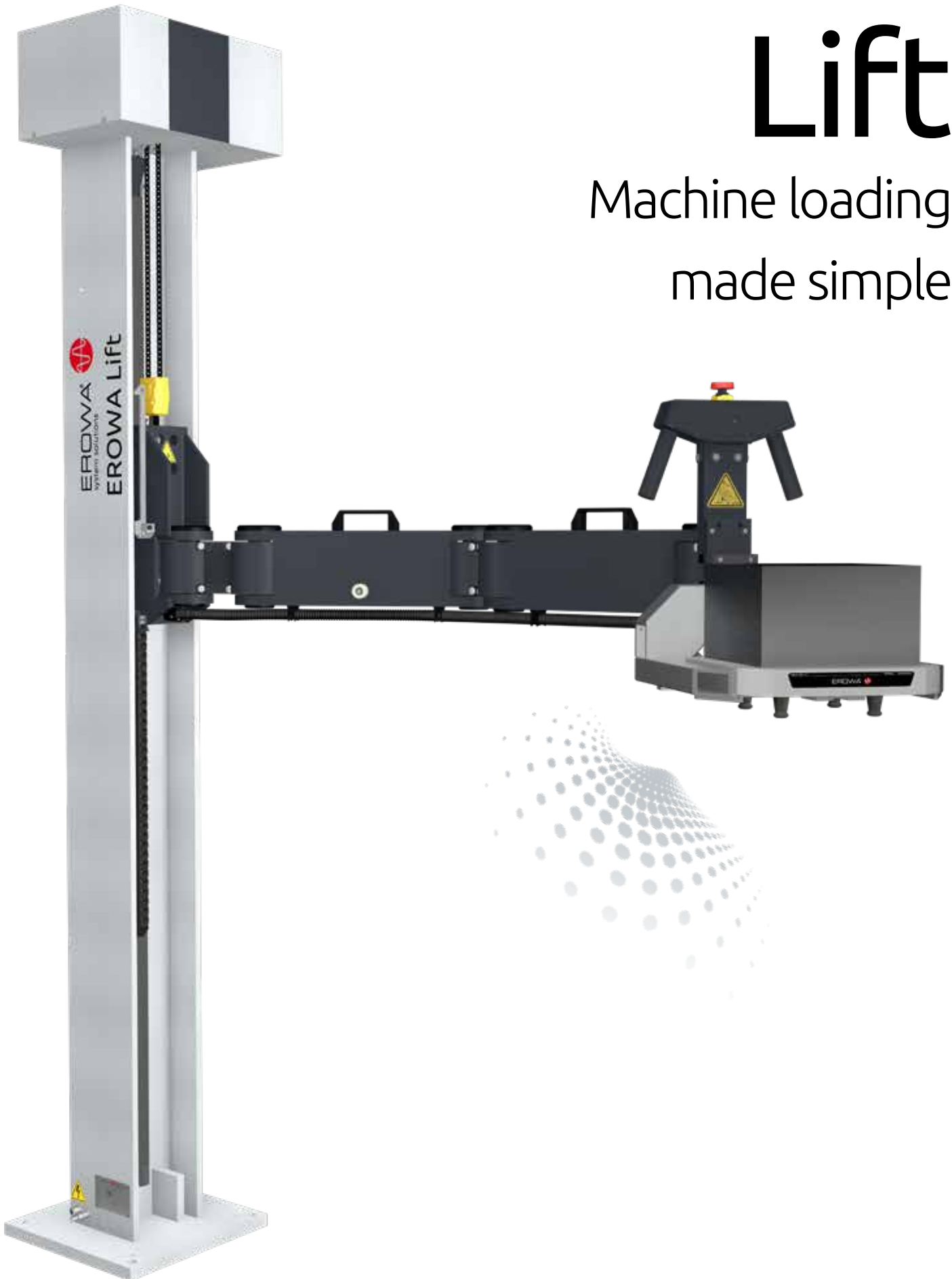




Lift

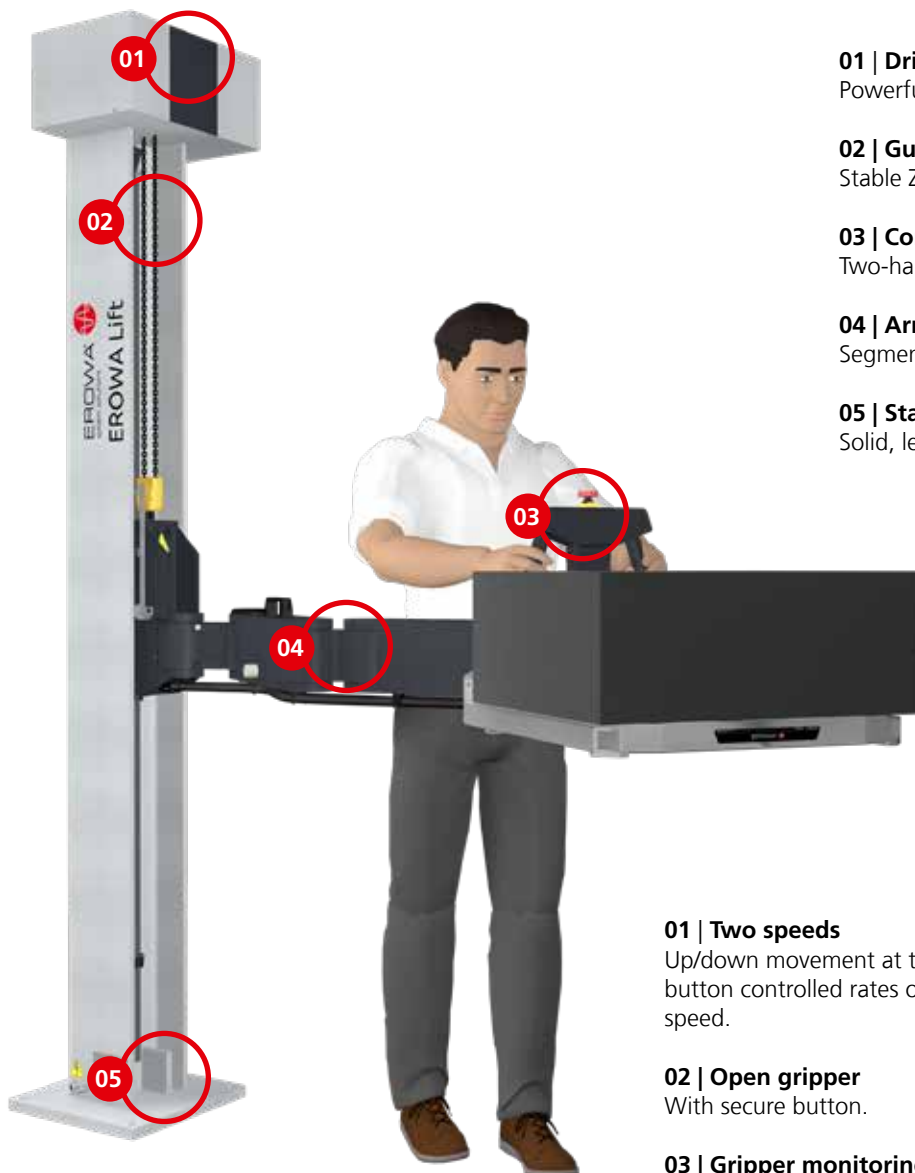
Machine loading
made simple



EROWA Lift

When it comes to frequent pallet changes, either directly onto the machine or into the handling facility, the EROWA Lift is just the thing. Installed in a fixed position next to the machine, it's always there when it's needed.

From transport pallets and up to the top level of the Robot: workpieces are moved safely.



01 | Drive

Powerful drive with two-level speed.

02 | Guidance

Stable Z-axis guidance.

03 | Control

Two-hand control with integrated operation.

04 | Arm

Segmented arm for optimal accessibility.

05 | Stabilization

Solid, leveled floor anchorage.

01 | Two speeds

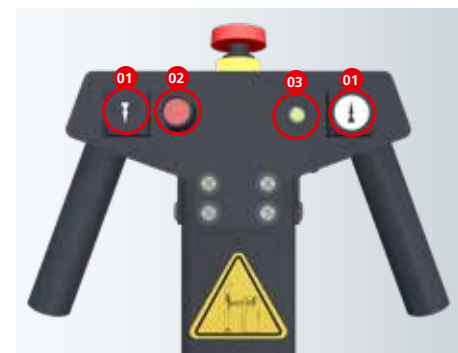
Up/down movement at two button controlled rates of speed.

02 | Open gripper

With secure button.

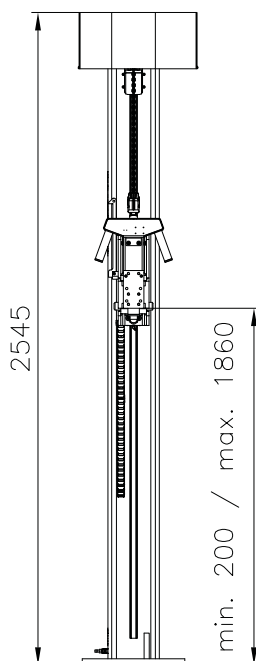
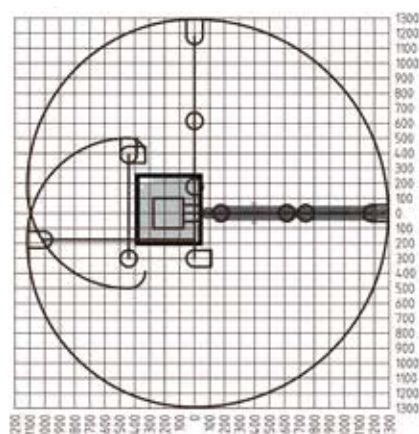
03 | Gripper monitoring

Control light: RCS 5 gripper clamped.

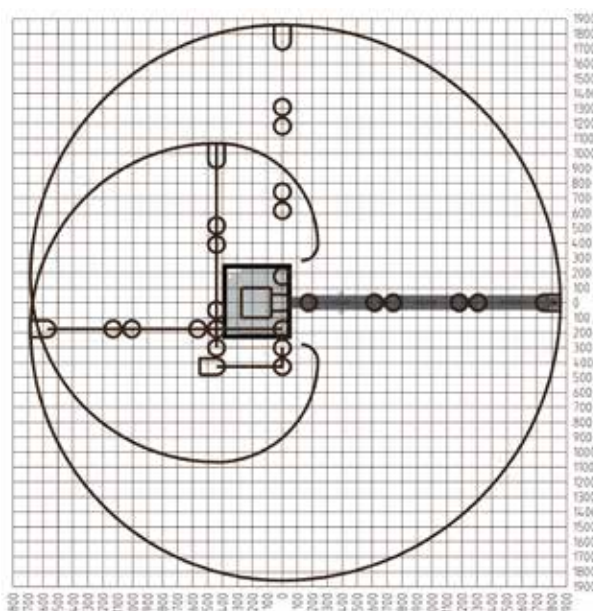


Lifting pallets without any strain on your back: from the workshop trolley directly into the magazine. Also accessible at the very top.

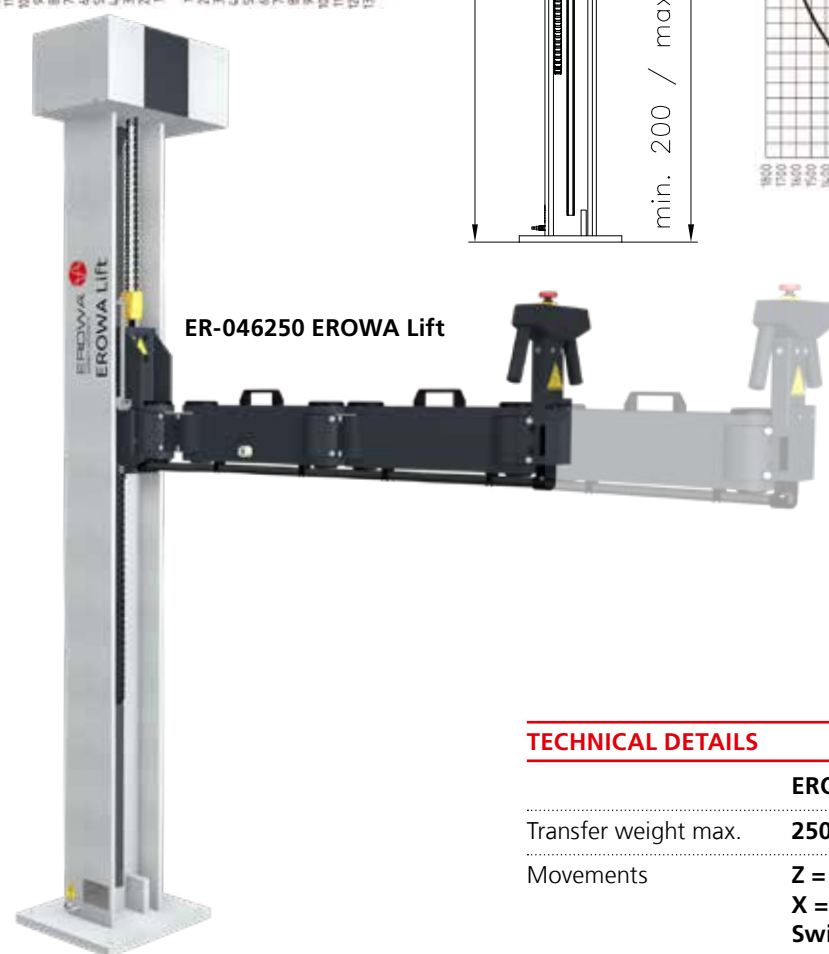
EROWA Lift standard (max. 250 kg)



EROWA Lift long axis (max. 100 kg)



ER-046250 EROWA Lift

Option
ER-111922 Long Arm

MANIPULATOR USED TO LOAD

machine tools
pallet magazines
Robot magazines
measuring stations
quill chucks
table chucks

TECHNICAL DETAILS

	EROWA Lift standard	EROWA Lift long axis
Transfer weight max.	250 kg	100 kg
Movements	Z = 1660 mm X = 1300 mm Swivel range 360°	Z = 1660 mm X = 1850 mm Swivel range 360°
Installation	4 heavy duty anchors \varnothing 18 x 132 mm Floor strength min. C20/25	
Pneumatic system min.	5 bar	
Voltage	3x 208-480 V	
Frequency	50/60 Hz	
Drive	Quick motion 4m/min. Slow motion 1m/min.	
Color	RAL 7035	
Note	Grippers must be ordered separately	

Grippers for the EROWA Lift

ER-046162 Gripper RCS 5



max. 2500 N. Clamping status display.

ER-078989 Gripper ITS 115



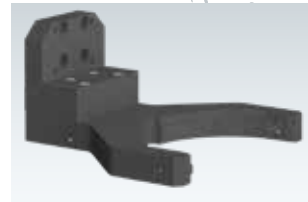
max. 400 N for ITS 115 pallets.

ER-030192 Gripper ITS 148



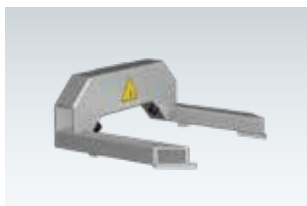
max. 400 N for ITS 148 pallets.

ER-086589 Gripper PC210 RN



max. 1000 N for PC210 RN pallets with gripper slot.

ER-046163 Gripper fork UPC fix



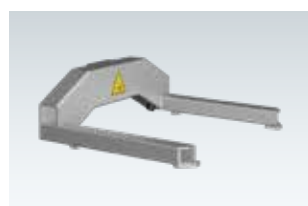
max. 2500 N for UPC pallets.

ER-046164 Gripper fork UPC with RCS5



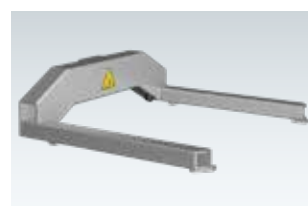
max. 1500 N for UPC pallets.

ER-042568 Gripper fork MTS 400



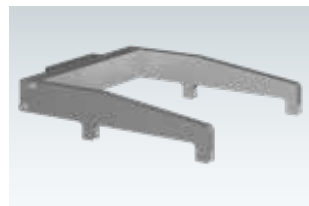
max. 2500 N for MTS 400 pallets.

ER-070088 Gripper fork MTS 500



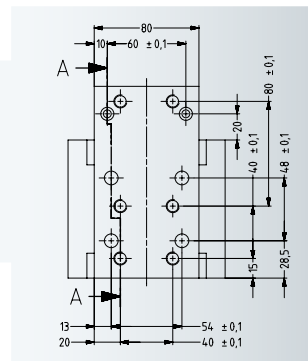
max. 2500 N for MTS 500 pallets.

FrameSet gripper



For FrameSet in diverse versions on request.

Connection dimensions for special grippers



Options

ER-127063 Switch kit



Switching pneumatic system between gripper and RCS5 coupling.

ER-123093 Position display



ER-099451 Swiveling axis 180°



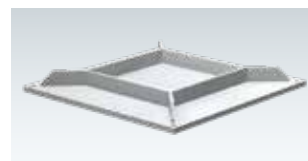
Pneumatic swiveling axis 180° and torque 50 Nm.

ER-108194 RCS5 Gripper with load hook



max. 2500 N. Load hook for RCS5 coupling.

ER-045702 Large base plate 800x800x80 mm



For poor floor conditions.

The display is used to visually recognize approach positions and to approach them faster.